



Golf

Contents

- 04** Introduction
- 06** Exterior
- 08** Interior
- 10** Technology
- 12** IQ.Drive
- 14** Golf GTI
- 16** Optional Packages
- 18** Colours & Upholstery
- 20** Accessories
- 24** 5 Year Warranty
- 25** Volkswagen Choice
- 26** Specification Highlights







GOLF

NSW
ELI-86Y
Volkswagen



Golf

Fun for everyone

The Volkswagen Golf is that rare breed – an iconic vehicle with a heritage spanning almost 50 years, but one that moves resolutely with the times.

The latest Golf, the 8th generation to wear the venerated Golf badge, marks the next stage in the evolution of an automotive classic. All of the familiar Golf attributes are still present – from the entry to the range through to the potent Golf GTI – but this new generation of Golf has taken bold strides towards an era of digitalisation and autonomous driving.

Intelligent IQ.DRIVE* safety systems in the new Golf, harness innovative technologies such as Travel Assist to make every drive safe and comfortable. And there's no end to the infotainment possibilities presented by the Golf's impressive digital instrumentation with high-resolution display screens and intuitively useable functions.

Timeless Golf styling combines with new dynamic design elements to form a vehicle that is both reassuringly familiar and strikingly contemporary. Nowhere is this more evident than in the latest generation of Golf GTI, which takes all of the GTI's archetypal styling cues, such as red stripe across the radiator grille and honeycomb air intake, and gives them a thoroughly modern flourish. Updated features such as dynamic new front styling and redesigned LED headlights and taillights in the Golf GTI and across the entire range reveal a vehicle whose every element has been carefully considered.

Complementing the Golf's sleek new styling is a 1.4-litre turbocharged TSI petrol engine (2.0-litre TSI engine in the Golf GTI) offering effortless performance and superior efficiency. Combine satisfying engine performance with the Golf's assured roadholding abilities, its suite of driver assistance aids and optimum levels of comfort and you have a vehicle that offers unalloyed driving pleasure.

*Safety technologies are designed to assist the driver, but should not be used as a substitute for safe driving practices.

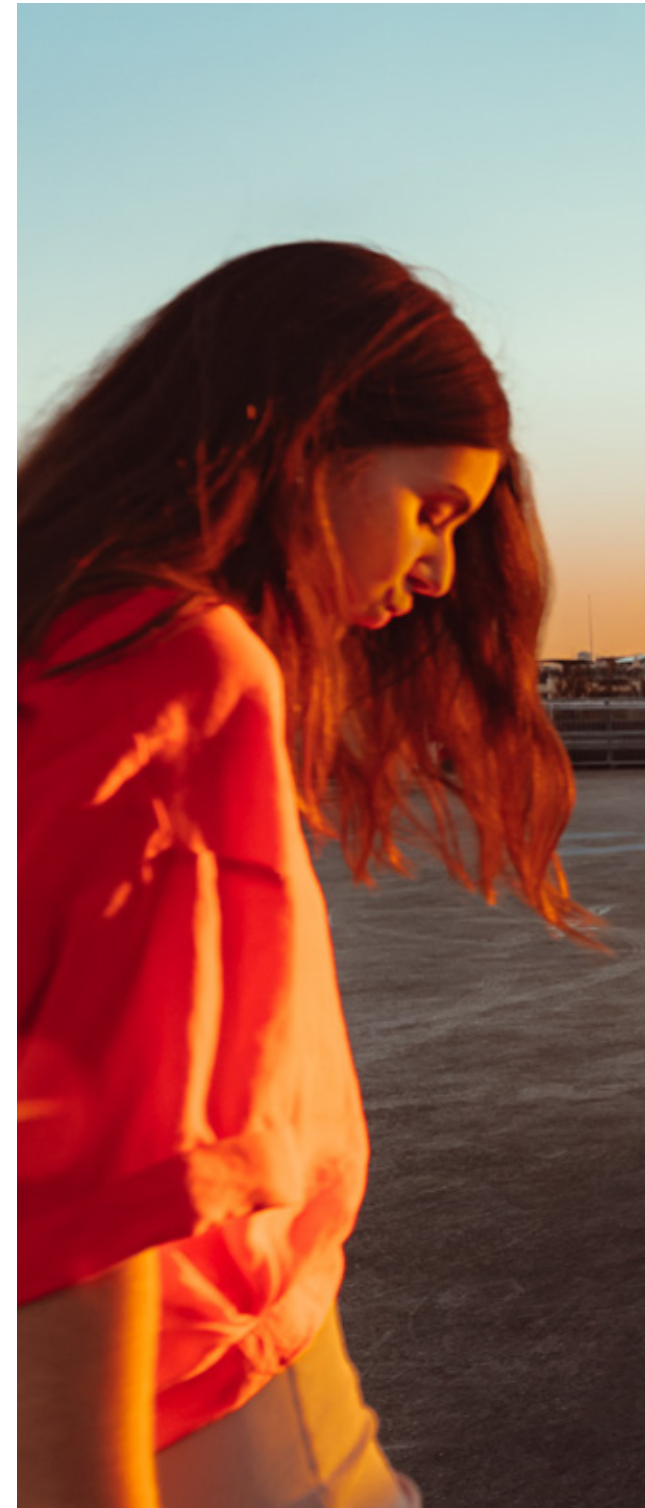
Exterior

The Volkswagen Golf long ago established itself as belonging to the pantheon of automotive design classics. That's why this 8th generation of the Golf marks an evolution, rather than a revolution, of the shape that is known and loved by so many.

An updated body structure means the Golf is safer than it has ever been, while dynamic new front bumper styling, eye-catching lower air intake grille, narrow LED headlights and slim radiator grille incorporating the redesigned Volkswagen roundel all represent the next stage in the design evolution of the Golf.

Viewed in profile, a prominent character line draws the eye from the front headlights to powerful rear haunches. The rear design of the Golf contributes to the cohesive whole. Horizontal lines and narrow LED headlights either side of the Golf nameplate convey an impression of width, while the smooth lines of the tailgate act in harmony with the Golf's elegant rear diffuser.

Special mention must always be made of the Golf R-Line and Golf GTI whenever discussing vehicle aesthetics. Sporty exterior and interior styling in the Golf R-Line convey a sense of speed and athleticism. As for the iconic Golf GTI, all of the model's traditional design hallmarks have been retained, but improved upon. The famous red radiator grille stripe is now illuminated (it forms part of the LED daytime running lights). And the characteristic black honeycomb air intake now features a striking arrangement of LEDs on either side to create the vehicle's fog lights. Of course, the Golf GTI wouldn't be the same if it wasn't for the vehicle's distinctive dual chrome exhaust tailpipes and potent-looking red brake callipers. No matter which Golf you drive, you can't help but make a bold design statement.





Interior

Driver and passengers alike are immediately struck by how comfortable and solid the newest Volkswagen Golf feels, plus how easily it mixes quality design and functionality. The Golf's solidity comes through in the reassuring 'thunk' you hear when closing any of its doors, but it's also apparent in the reassuring fixtures and finishes used right throughout the cabin. Advanced German engineering ensures that every facet of the interior has a role to play, that the cabin layout is logical and ordered by definition, and that comfort and practicality are second to none. The ergonomic appeal of any cabin can be measured by how refreshed vehicle occupants feel once they have finished a long drive. In this regard the Golf excels. Adjustable seating and steering mean drivers can find an ideal driving position to sustain them on long road trips. Low levels of noise/vibration/harshness (NVH) make every journey a relaxing one, as do controls that fall easily to hand and small touches like rear air-conditioning vents for rear passenger comfort.

Other updates to the latest-generation Golf are subtle, but prove that the Golf always moves with the times. Take, for example, the headlight switchgear which, together with the windscreen and rear window controls, are now operated using a digital touch panel. This modern convenience is a standard addition to the Golf range, whereas the Golf R-Line model grade receives additional intuitive features such as capacitive touch controls on the steering wheel in place of conventional buttons.

Nowhere does form and function intersect more completely than in the range-topping Golf GTI. With its honeycomb-patterned dash panel and door trims, sports seats with integrated head restraints, GTI-style tartan fabric, stainless steel pedals, the Golf GTI's interior is as distinctive – and impressive – as they come.



Golf GTI model shown





Technology

In keeping with Volkswagen's commitment to technology that excites and inspires, the cabin of the new Golf receives the very latest in digital innovation.

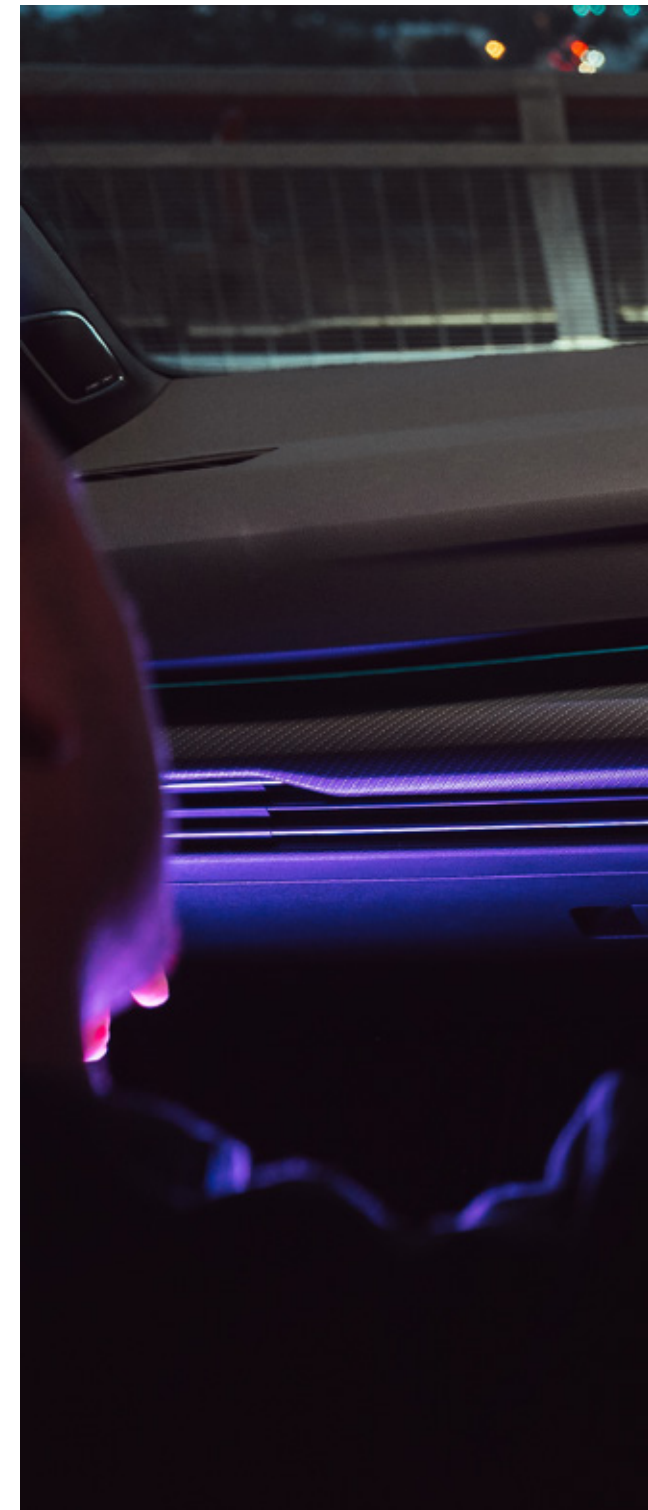
Foremost among the inclusions in the new Golf Life (and Golf R-Line and Golf GTI) is the Innovision Cockpit, an immersive, fully digital driver display landscape consisting of Digital Cockpit Pro and 10-inch Discover Pro navigation system. The intuitive touchscreens mean that many of the buttons and controls traditionally found on a dashboard have been made a thing of the past.

Other features of the Golf's cabin are just as impressive. Standard across the Golf range is the Air Care 3-zone climate control air-conditioning system with air cleaning function and allergen filter. LED technology is used as effectively inside the cabin as it is out, with the Golf Life able to illuminate the interior with your favourite colour courtesy of 10-colour ambient lighting (30 colours as standard in the Golf R-Line and Golf GTI).

App-Connect~ for Apple CarPlay® and Android Auto™ and four USB-C ports mean you're only a touch away from all your favourite apps and media files. And Keyless start makes it a cinch to jump in your Golf and just drive away. The Golf Life ups the 'connectivity' ante with Wireless App-Connect~ and wireless charging, as well other impressive features such as Keyless Access. As befitting its sporty styling, the Golf R-Line incorporates a multi-function sports steering wheel and stainless steel pedals, dark tinted rear and side windows and progressive steering (features also found in the Golf GTI).



~App-Connect featuring wireless Apple CarPlay® and wireless Android Auto™ (not available of Golf variant, standard on Golf Life, Golf R-Line and Golf GTI) is compatible with the latest versions of iOS and Android, active data service required, optional connection cable (sold separately).







IQ.DRIVE*

The latest generation of Golf heralds an exciting era of digitalisation and a further step towards fully autonomous driving.

There's no denying the importance of Volkswagen's IQ.DRIVE when it comes to intelligent safety and assured driving enjoyment. The term is used to describe all of Volkswagen's driver assistance systems, encompassing innovations that Volkswagen is developing to aid automated driving, plus all the technology Volkswagen offers in its vehicles to ensure a safe and satisfying driving experience.

Central to the IQ.DRIVE package is Travel Assist, a sophisticated driver aid that is especially suited to long journeys on the motorway. It uses the combined functions of Adaptive Cruise Control (ACC), Lane Assist and Side Assist to accelerate, brake and maintain the vehicle's position within its lane.

The capacitive steering wheel can detect whether the driver is fully in control of the steering wheel and will issue a visual and audible warning if control is not detected.

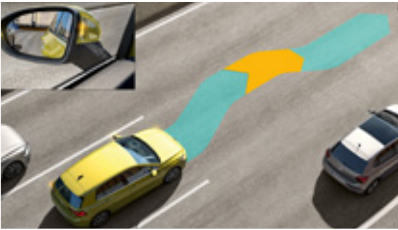
The system works in conjunction with the Golf's comprehensive Occupant Protection system, which incorporates eight airbags (front, front side and rear side, and curtain airbags) to shield the driver and passengers from the worst effects of a collision.

The Golf Life (plus R-Line and GTI models) takes driver assistance to the next level with inclusions such as Exit Warning System*, which warns vehicle occupants of a potential collision when about to open a door, and Emergency Assist* technology. The latter provides a visual and audible warning to the driver if no steering activity is detected, such as when the driver is incapacitated, and takes measures such as slowing the vehicle and tightening the seatbelt to help reduce harm.

Safety is always paramount, but the Golf has given just as much heed to technology designed to assist in getting around town. Park Assist*, Rear View Camera (RVC)* and Keyless Access (Golf Life and above) are all there to promote everyday driver convenience.



*Safety technologies are designed to assist the driver, but should not be used as a substitute for safe driving practices.



Golf GTI model shown

The Golf GTI

With its impressive pedigree, outstanding performance characteristics and potent styling, the Golf GTI is the small sports car that other vehicles can only aspire to be.

The 8th evolution of Volkswagen's original hot hatch incorporates all of the technical upgrades added to the recent model update, plus with new suspension materials and configurability options. New styling updates, such as striking LED front fog lights, sculpted front seats and Innovision Cockpit improve on what is already a design classic.

Every drive in the Golf GTI is informed by a performance philosophy that prioritises exhilaration and downright driving fun. The GTI's punchy TSI turbocharged petrol engine generates 180kW of power and 370Nm of torque. It pairs perfectly with Volkswagen's 7-speed wet clutch DSG (Direct Shift Gearbox) transmission, now equipped with 'shift by wire' technology in place of a selector lever.

Drivers feel at one with the road courtesy of the Golf GTI's new Vehicle Dynamics Manager, a control system that coordinates and activates the functions of the electronically controlled front-axle differential lock, the Extended Electronic Differential Lock (XDL) as well as the lateral dynamic components of the Adaptive Chassis Control during every driving manoeuvre. Central to the system is electro-mechanical front differential lock, which significantly improves handling performance by counteracting understeer and minimising traction control interventions. The result is more agile steering, greater stability in vehicle response and an ability to take faster speeds through corners.

As always, the driver is placed central to the action. The Golf GTI's multi-function sports steering wheel with perforated leather and silver spokes offers progressive steering for added dynamic feel. Steering-wheel-mounted Tiptronic gearshift paddles allow for rapid up and downshifts and make all the difference when driving with purpose.

Also at the fingertips is Driver Profile Selection, which allows for easy selection of Comfort, Normal, Sport or Individual modes. Each profile setting adjusts the Golf GTI's Adaptive Chassis Control to fine-tune the vehicle's driving characteristics and emphasise the unbridled experience of driving a GTI.





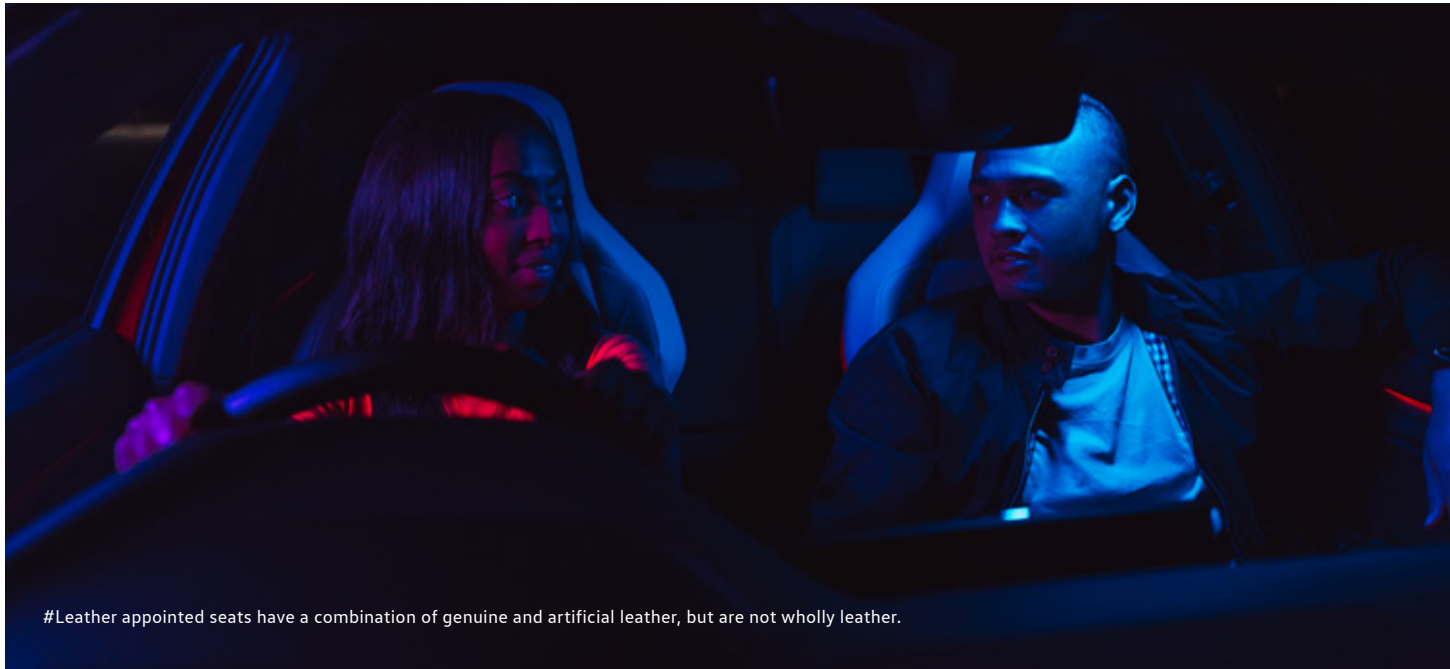
Optional Packages

You're never stuck for driver comforts when you drive a Golf. But you can tailor your vehicle to suit your lifestyle by choosing from among a range of comprehensive optional packages.

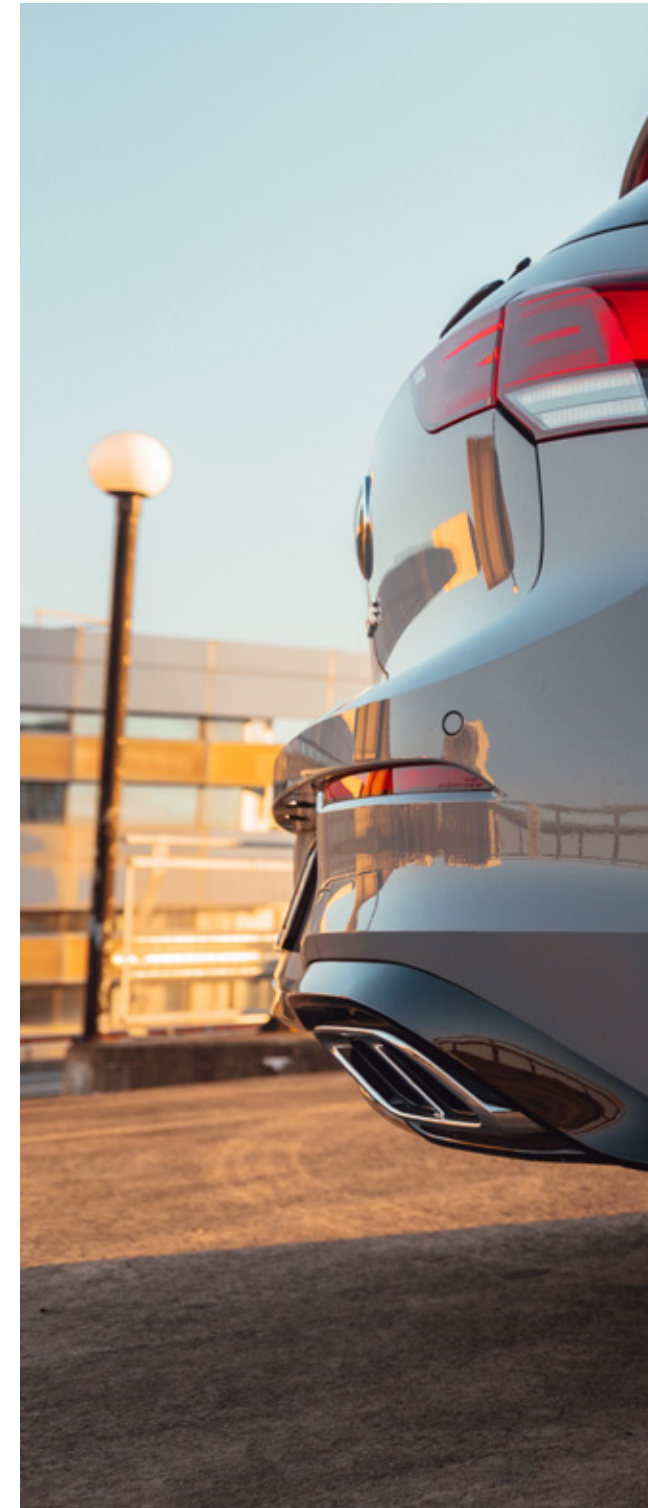
Every trip in the Golf is an adventure with the Sound & Vision package, available in the Golf Life, R-Line and GTI. Music has never sounded as good as it has through the premium Harman/Kardon audio system, with its eight speakers + centre speaker, subwoofer and powerful 12-channel amplifier.

Also included in the package is a futuristic Head Up Display that projects useful vehicle information such as speed and navigation advice onto the windscreen, meaning drivers can keep their eyes firmly on the road. The Comfort & Style Package is an optional inclusion for the Golf Life and offers an outstanding array of comfortable conveniences for driver and passenger alike. Supple Microfleece upholstery and Comfort sport seats provide firm support with lashings of style, while a panoramic sunroof allows natural light to stream into the cabin (it's also a one-off option in the Golf R-Line). Golf Life drivers can also select a cabin colour to perfectly complement their mood by choosing from among 30 stunning ambient colour options. It's a feature that really comes into its own when the sun goes down.

The Luxury package, available only in the Golf GTI, offers additions that are the pinnacle of sophistication. You'll be sitting in the lap of luxury with the package's Vienna leather appointed upholstery[#], electrically operated driver seat with memory, heated and ventilated front seats, heated steering wheel and panoramic electric glass sunroof.



[#]Leather appointed seats have a combination of genuine and artificial leather, but are not wholly leather.





Golf, Golf Life & Golf R-Line - Colours and Upholstery



Candy White



Deep Black PE



Dolphin Grey M



Reflex Silver M
(Excluding R-Line)



Atlantic Blue M



Pomello Yellow PM



Moonstone Grey P
(R-Line)



Golf - Standard Seats
Cloth



Golf Life - Comfort Seats
Comfort cloth



Golf Life - Comfort sport seats (Optional)
Microfleece-cloth



Golf Life - R-Line
Sports cloth-Microfleece

Please note that Metallic, Pearl Effect, Premium and Premium Metallic paint are optional at extra cost. The print process does not allow for exact reproduction of the exterior or the upholstery colours. Please contact your Volkswagen Dealer for further information on colours and upholstery combinations.

Golf GTI - Colours and Upholstery



Pure White



Deep Black PE



Dolphin Grey M



Moonstone Grey P



Atlantic Blue M



Kings Red PM



'Scale Paper' Black/Red
Sports cloth seat upholstery



Black Vienna
Leather appointed seat upholstery#

#Leather appointed seats have a combination of genuine and artificial leather, but are not wholly leather. Please note that Premium Metallic paints are optional at extra cost. The print process does not allow for exact reproduction of the exterior or the upholstery colours. Please contact your Volkswagen Dealer for further information on colours and upholstery combinations.

Find your accessories

Volkswagen Genuine Accessories ensures your Volkswagen remains 100% Volkswagen. The extensive range of Golf Genuine Accessories provides you with the opportunity to adapt your Golf even more precisely to your individual needs. From transport, exterior and interior solutions to alloy wheels that perfectly complement your Volkswagen.

- 01 18" Pretoria in dark graphite matte
- 02 18" Pretoria in gloss black
- 03 18" Pretoria in silver
- 04 Dynamic hub cap
- 05 Universal traffic recorder
- 06 Premium boot liner
- 07 Luggage compartment loadliner
- 08 Luggage compartment reversible mat with protective flap





- 09 Loading sill plate in carbon look
- 10 Loading sill plate in silver
- 11 Door sill protection film, black with silver
- 12 All-weather floor mats

- 13 Textile floor mats
- 14 Sunblind set
- 15 Mudflaps
- 16 Slimline weathershields



09



10



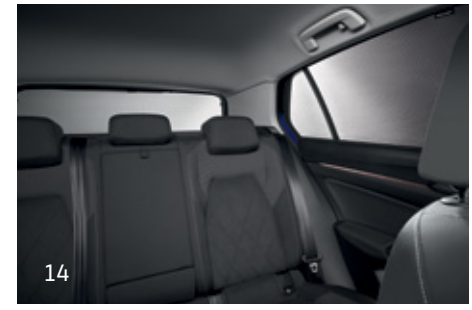
11



12



13



14



15



16

Overseas models are shown for illustrative purposes only. Optional accessories at extra cost. Please note that the above accessories may have an effect on fuel efficiency. Items such as sports equipment and tablets are shown for illustration purposes only and are not available for purchase from Volkswagen Group Australia or its Dealers. For a full range of Volkswagen Genuine Accessories, please refer to the accessories tab at www.volkswagen.com.au or visit an authorised Volkswagen Dealer.

- 17 Tablet holder
- 18 Coat hanger
- 19 Bag hook
- 20 Roof rack
- 21 Roof box

- 22 Bike carrier
- 23 Surfboard carrier
- 24 Ski and snowboard carrier
- 25 LED exterior mirror turn signal animated (dynamic turn signal).



- 26 Oettinger® front spoiler
- 27 Oettinger® side skirt
- 28 Oettinger® rear diffuser
- 29 Oettinger® roof spoiler



Oettinger® is a registered trade mark of Oettinger GmbH. Oettinger accessories are primed (requires painting at additional cost). Not compatible with Golf GTI and Golf R-Line.



26



27



28



29

Overseas models are shown for illustrative purposes only. Optional accessories at extra cost. Please note that the above accessories may have an effect on fuel efficiency. Items such as sports equipment and tablets are shown for illustration purposes only and are not available for purchase from Volkswagen Group Australia or its Dealers. For a full range of Volkswagen Genuine Accessories, please refer to the accessories tab at www.volkswagen.com.au or visit an authorised Volkswagen Dealer.

Peace of Mind



5 years Unlimited Kilometre Warranty

At Volkswagen, we pride ourselves on the highest quality standards that come with German engineering.

We back this commitment with a 5 year unlimited kilometre warranty on all new Volkswagen vehicles*.



1 year Roadside Assist

Every new Volkswagen comes with a 1 year Roadside Assist membership[^].

That's 24 hour roadside assistance, emergency accommodation, car rental and towing as well as property and other assistance, all included for added peace of mind.



Volkswagen Care Plans

Volkswagen Care Plans[†] have you covered for your first 3 or 5 scheduled services, providing you savings off the total Assured Service Pricing RRP. It's convenient, hassle-free scheduled servicing easily available for purchase at your local Volkswagen Dealer.



Assured Service Pricing

Assured Service Pricing[#] gives you the transparency of knowing how much your service will cost up front.

Our Volkswagen Dealers have access to the latest diagnostic equipment and tools. Plus, they use Volkswagen Genuine Parts[®] to ensure your Volkswagen stays a Volkswagen.

You're in safe hands at your Volkswagen Dealer when it comes to servicing.

*Conditions and exclusions apply, see <https://www.volkswagen.com.au/en/owners-service/warranty.html>. Your rights under this warranty are provided in addition to, and in some cases overlap with, consumer guarantees under the Australian Consumer Law and do not limit or replace them.

[^]Volkswagen Roadside Assist is provided by AWP Australia Pty Ltd ABN 52 097 227 177 trading as Allianz Global Assistance, under an arrangement with Volkswagen Group Australia Pty Limited ABN 14 093 117 876. Conditions and exclusions apply, see <https://www.volkswagen.com.au/en/owners-service/roadside-assist.html>.

[†]Volkswagen Care Plans are available for purchase at <https://www.volkswagen.com.au/en/owners-service/care-plans.html> or from participating authorised Volkswagen Dealers for Eligible Vehicles and covers standard items as contained in each scheduled service interval only. The service intervals occur every 15,000 KM/12 months (whichever occurs first) for all models except Model Year 2018-2020 Crafter and Model Year 2021 Amarok models, which are scheduled to occur every 20,000 km/12 months (whichever occurs first). Excludes Model Year 2021 Crafter vehicles. These Care Plans can only be purchased prior to the first scheduled service and up to 22,500 km/15 months (whichever occurs first) for all models except Model Year 2018-2020 Crafter and Model Year 2021 Amarok models which is 30,000 km/15 months (whichever occurs first). The timeframe takes effect from when the vehicle is first reported in our system as 'sold'. Discount structure varies by model. For details of what is not included in a scheduled service, please refer to the program terms and conditions.

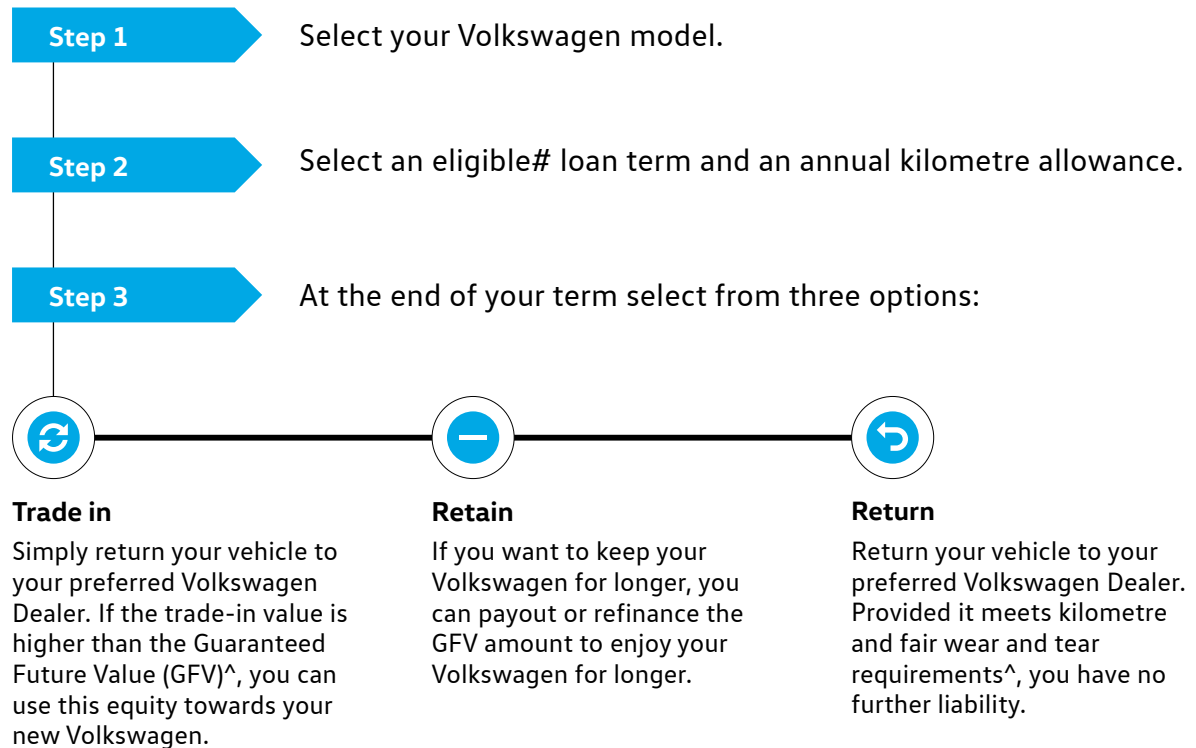
[#]Assured Service Pricing applies to the first 5 standard scheduled services of your vehicle which are scheduled to occur at every 15,000 km/12 month interval (whichever occurs first) or for Model Year 2018-2020 Crafter and Model Year 2021 Amarok models only, 20,000 km/12 month interval (whichever occurs first). Excludes Model Year 2021 Crafter vehicles. On or before 31 December each year, Volkswagen will publish the maximum price for a specified Schedule Service that will be applicable from, and remain fixed for, the following calendar year only. For details on the Eligible Model List, pricing, items not included and for full terms and conditions, please see <https://www.volkswagen.com.au/app/locals/service-pricing-guide>.

Volkswagen Choice[^]

Guarantee the minimum future value of your Volkswagen

Naturally we understand that your Volkswagen represents a valuable investment, so we understand that you want to maintain it in premium condition. Volkswagen Choice[^] is a finance program tailored to the requirements of Volkswagen owners by providing assurance around your Volkswagen's future value[^], whilst offering simple monthly instalment financing options.

Whether you are selecting your new Volkswagen for business or personal use, you can choose the contract term that best suits your requirements. Enjoy the confidence that comes from having locked in a minimum value up front to be attributed to your vehicle at the end of your contract[^]. There are also no account keeping fees with a fixed interest rate.



[^]Volkswagen Guaranteed Future Value consists of an option to return your vehicle to Volkswagen Financial Services (VFS) ABN 20 097 071 460, Australian Credit Licence 389344, at the end of the term and requires VFS to purchase the vehicle at an agreed price determined by VFS, known as the Guaranteed Future Value (GFV). [#]Eligible loan terms include 12-60 months, vary by model and are subject to change, ask dealer for more information. At the end of the term, you can elect to: (1) trade-in; (2) return; or (3) retain the vehicle by paying the GFV, which is a lump sum owed to VFS at the end of the loan term after all repayments have been made. You will be liable for any loan contract deficit and additional charges if you exceed the nominated kilometre allowance and/or the vehicle is not in an acceptable condition. Available on new and demonstrator Volkswagen vehicles for selected models. Contact your Official Volkswagen Dealer to verify eligible vehicles for this program. Fleet, government, rental buyers, hire car and chauffeur companies excluded.

Golf Model Range

For more information on features and specifications, please download the specification sheets available at www.volkswagen.com.au.

Golf	Life Specification highlights in addition to Golf	R-Line Specification highlights in addition to Life	GTI Specification highlights in addition to R-Line	
1.4L 110kW / 250Nm		2.0L 180kW / 370Nm		
<ul style="list-style-type: none"> • LED headlights • Front Assist* • Oncoming vehicle braking when turning • Adaptive Cruise Control (ACC)* • Travel Assist* • Lane Assist* • Side Assist with Rear Traffic Alert* • Rear view camera (RVC)* • 8 airbags • Proactive passenger protection system • Park Assist* • Digital Cockpit • Air Care 3 zone climate control air conditioning • Composition Media 8.25" infotainment system • App-Connect • 16" Norfolk alloy wheels • Rain sensing windscreen wipers • Auto dimming rear-view mirror 	<ul style="list-style-type: none"> • Emergency Assist* • Exit warning system* • Innovision Cockpit: Digital Cockpit Pro and Discover Pro 10" satellite navigation system • 6+1 speakers • Wireless App-Connect- • Wireless charging • 10-colour ambient lighting • Illuminated door handle recesses • Surround lighting with welcome light • 17" Ventura alloy wheels • Keyless Access • Exterior mirrors power-folding • Comfort front seats • Front seat lumbar adjustment • Rear seat centre armrest • Floor mats 	<ul style="list-style-type: none"> • R-Line exterior styling • R-Line interior styling • 18" Bergamo alloy wheels • Sports suspension • Progressive steering • LED performance headlights • Light Assist • Multi-function sport leather steering wheel with touch controls • Sports seats with integrated head restraints • 30-colour ambient lighting • LED lighting in front foot wells • Dark tinted rear and rear side windows • Driving profile selection 	<ul style="list-style-type: none"> • LED grille strip • LED front fog lights • Premium Gloss, Metallic & Pearl Effect paint • GTI exterior styling • GTI interior styling • 18" Richmond alloy wheels • Sports suspension • Vehicle Dynamics Manager Coordinates and activates the functions: Extended Electronic Differential Lock (XDL), Front Differential Lock and Adaptive Chassis Control • Alarm system with interior monitoring 	
6 Speed Manual / 8 Speed Automatic		8 Speed Automatic	8 Speed Automatic	7 Speed DSG
Optional Metallic, Pearl Effect and Premium Metallic paint finishes		Optional Metallic, Premium Metallic, Premium Gloss & Pearl Effect Paint		Optional Premium Metallic Paint
Optional Sound & Vision Package - Head up Display, Harman Kardon premium audio				
Optional Comfort & Style Package Microfleece upholstery, comfort sport front seats, panoramic sunroof, 30-colour ambient lighting		Optional Panoramic Sunroof	Optional Luxury Package Panoramic electric glass sunroof, Vienna leather appointed upholstery#, heated and ventilated front seats, electric driver's seat with memory, steering wheel with heating function	

For a comprehensive list of features and specifications, please refer to www.volkswagen.com.au

*Safety technologies are designed to assist the driver, but should not be used as a substitute for safe driving practices.

-App-Connect featuring wireless Apple CarPlay® and wireless Android Auto™ is compatible with the latest versions of iOS and Android, active data service required, optional connection cable (sold separately).

#Leather appointed seats have a combination of genuine and artificial leather, but are not wholly leather.



Golf

Volkswagen Group Australia Pty Ltd
24 Muir Road Chullora NSW 2190
ABN 14 093 117 876

Printed in Australia
June 2021

Publication: VWPGOLFMY21

Important information

Apple CarPlay® is a registered trade mark of Apple Inc. Android Auto™ is a registered trade mark of Google Inc. MirrorLink® is a registered trade mark of Car Connectivity Consortium LLC. Bluetooth® is a registered trade mark of Bluetooth SIG Inc.

Volkswagen is distributed by Volkswagen Group Australia Pty Ltd (ABN 14 093 117 876) of 24 Muir Road Chullora, NSW 2190. Specifications are as planned at June 2021, for Model Year 2021 and are subject to change without notice or obligation. All information in this specification sheet is correct at the time of publication, however variations may occur from time to time and Volkswagen, in so far as it is permitted by law to do so, shall not be liable in any way as a result of any reliance by any person on anything contained in this brochure sheet. Authorised Volkswagen Dealers will provide up-to-date information on model application, design feature, prices, and availability on request.

Your Volkswagen Dealer.



Safety and Driver Assistance

	Golf	Golf Life	Golf R-Line	Golf GTI
Airbags				
Driver and front passenger airbags	S	S	S	S
Driver and front passenger side airbags	S	S	S	S
Rear seat side airbags	S	S	S	S
Curtain airbags, front and rear	S	S	S	S
Anti-theft				
Alarm system with interior monitoring and towing protection	—	—	—	S
Electronic engine immobiliser	S	S	S	S
Body				
Fully galvanised body with 12 year corrosion perforation warranty	S	S	S	S
Door side impact protection	S	S	S	S
Rigid safety cell with front and rear crumple zones	S	S	S	S
Brakes				
Automatic flashing brake lights activated in emergency braking situation	S	S	S	S
Anti-lock Braking System (ABS)	S	S	S	S
Auto hold function Manual and DSG models	S	—	—	S
Brake Assist	S	S	S	S
Electronic Brake-pressure Distribution (EBD)	S	S	S	S
Electro-mechanical parking brake	S	S	S	S
Hill Start Assist (HSA) Automatic models	S	S	S	—
Multi-collision brake	S	S	S	S
Red brake callipers	—	—	—	S
Child restraints				
Child seat top tether anchorage points (3)	S	S	S	S
ISOFIX child seat anchorage points, outer rear seats	S	S	S	S
Head restraints				
Front safety optimised head restraints, height adjustable	S	S	—	—
Rear head restraints (3)	S	S	S	S
Integrated front head restraints	—	—	S	S
IQ.DRIVE*				
Adaptive Cruise Control (ACC) with stop and go function^	S	S	S	S
Automatic kerb function when reversing, passenger's side exterior mirror tilt	S	S	S	S
Side Assist with Rear Traffic Alert	S	S	S	S
Distance warning display	S	S	S	S
Driver Fatigue Detection system	S	S	S	S
Emergency Assist	—	S	S	S
Exit Warning System	—	S	S	S
Front Assist with Pedestrian and Cyclist Monitoring functions	S	S	S	S
Lane Assist	S	S	S	S
Light Assist, automatic high beam headlight function	—	—	S	S
Manoeuvre braking, low speed emergency braking front and rear	S	S	S	S
Oncoming vehicle braking when turning	S	S	S	S
Optical Parking System (OPS) in infotainment display	S	S	S	S
Park Assist, parking bay and parallel parking assistance	S	S	S	S
Parking distance sensors, front and rear with acoustic and visual warning	S	S	S	S
Rear View Camera (RVC) with dynamic and static guidance lines	S	S	S	S
Traffic Jam Assist^	S	S	S	S
Travel Assist	S	S	S	S

*Safety technologies are designed to assist the driver, but should not be used as a substitute for safe driving practices.
 ^Traffic Jam Assist and stop and go function is only available with DSG transmission (automatic) only.

S Standard O Optional Extra P Available as part of an optional package — Not available

Safety and Driver Assistance Cont.

	Golf	Golf Life	Golf R-Line	Golf GTI
Locking				
Child safety locks on rear doors	S	S	S	S
Fuel filler flap lock/unlock by remote, push to open	S	S	S	S
Keyless Access, keyless entry and starting system including starter button	—	S	S	S
Keyless Go, keyless starting system including starter button	S	—	—	—
One touch lock / unlock for driver	S	S	S	S
Programmable locking functions	S	S	S	S
Remote central locking	S	S	S	S
Seat Belts				
Front height adjustable with pre-tensioners and belt force limiters	S	S	S	S
Proactive occupant protection system in combination with Front Assist and Side Assist	S	S	S	S
Outer rear with belt tensioner and force limiter	S	S	S	S
Visual and acoustic warning for front and rear seat passengers seat belts not fastened	S	S	S	S
3 point seat belts for all passengers	S	S	S	S
Traction Control				
Anti-Slip Regulation (ASR)	S	S	S	S
Electronic Differential Lock (EDL)	S	S	S	S
Electronic Stabilisation Program (ESP)	S	S	S	S
Extended Electronic Differential Lock (XDL)	S	S	S	S
Vehicle Dynamics Manager, coordinates and activates the functions: Adaptive Chassis Control	—	—	—	S
Extended Electronic Differential Lock (XDL) Front differential lock	—	—	—	S

Exterior Equipment and Styling

	Golf	Golf Life	Golf R-Line	Golf GTI
Exterior highlights				
Body coloured bumper bars and door handles	S	S	S	S
Body coloured exterior rear view mirrors	S	S	S	S
Lower body side sill extensions in gloss black	—	—	S	—
Radiator grille highlights in gloss black and chrome	S	S	S	—
R-Line front bumper with gloss black C signature, front spoiler and large lower air intake	—	—	S	—
R-Line rear bumper with gloss black sports diffuser and chrome trim	—	—	S	—
Trapezoidal chrome bumper trims, left and right	—	—	S	—
Exposed chrome exhaust tail pipes, left and right	—	—	—	S
Large lower air intake with black honeycomb insert	—	—	—	S
Lower front spoiler extensions, lower body side sill extensions and front bumper detail in black	—	—	—	S
Radiator grille with red/illuminated strip and GTI nameplate	—	—	—	S
Rear bumper with black sports diffuser	—	—	—	S
Rear roof spoiler with black aerodynamic extensions	—	—	—	S
Paint				
Gloss paint finish	S	S	S	S
Metallic / Pearl Effect paint finish	O	O	O	S
Premium Gloss paint finish	—	—	O	S
Premium Metallic paint finish	O	O	O	O





Golf GTI model shown



Golf R-Line model shown



Golf GTI model shown

Exterior Equipment and Styling Cont.

	Golf	Golf Life	Golf R-Line	Golf GTI
Exterior Lighting				
Coming / leaving home function	S	S	S	S
Fog lamp, rear	S	S	S	S
Illuminated door handle recesses	—	S	S	S
LED headlights for low and high beam with LED daytime driving lights	S	S	—	—
LED performance headlights for low and high beam with unique LED daytime driving light signature and automatic self-leveling	—	—	S	S
LED rear tail lights	S	S	S	S
Low light sensor with automatic headlight function	S	S	S	S
Poor weather light and cornering light	—	—	S	—
Rear registration plate light, LED	S	S	S	S
Surround lighting with welcome light (projection from door mirror)	—	S	S	S
Front fog lights with cornering light, 5x LED mounted each side in lower bumper in an X formation	—	—	—	S
Illuminated LED strip on radiator grille	—	—	—	S
Tinted Glass				
Heat insulating tinted glass	S	S	S	S
Dark tinted rear side window and rear window glass, 65% light absorbing	—	—	S	S
Tinted rear tail light clusters	S	S	S	S
Wheels				
Alloy wheels (Norfolk) 16x7" with 205/55 R16 tyres	S	—	—	—
Alloy wheels (Ventura) 17x7½" with 225/45 R17 tyres	—	S	—	—
Alloy wheels (Bergamo) 18x7½" with 225/40 R18 tyres	—	—	S	—
Alloy wheels (Richmond) 18x7½" with 225/40 R18 tyres	—	—	—	S
Anti-theft wheel bolts	S	S	S	S
Low tyre pressure indicator	S	S	S	S
Weight and space saving spare wheel	S	S	S	S

Comfort and Convenience

	Golf	Golf Life	Golf R-Line	Golf GTI
Armrest				
Front centre armrest, height and longitudinally adjustable with storage box and rear air outlets (2)	S	S	S	S
Rear seat centre armrest with cup holders (2) and load through provision	—	S	S	S
Air conditioning				
3 zone automatic climate control air conditioning with Smart and Classic Climate menus	S	S	S	S
Air Care air cleaning function	S	S	S	S
Air quality and humidity sensor with automatic air recirculation	S	S	S	S
Dust and pollen filter	S	S	S	S
Touch slider temperature controls	—	S	S	S
Comfort indicator function (1 x touch = 3 x flash)	S	S	S	S
Cup Holder				
Front (2)	S	S	S	S
Rear (2)	—	S	S	S
Bottle holders in front door pockets	S	S	S	S

Comfort and Convenience

	Golf	Golf Life	Golf R-Line	Golf GTI
Driving profile selection - Eco, Comfort, Sport and Individual driving modes	—	—	S	S
Floor mats				
Front and rear, carpet	—	S	S	—
Front and rear, carpet with red seam stitching	—	—	—	S
Grab handles - Soft fold away grab handles, front and rear	S	S	S	S
Interior highlights				
Aluminium finish accelerator and brake pedals	—	—	S	S
Chrome highlight trim on air vents, power window and exterior mirror switches	—	S	S	S
Decorative inlays, "new look" to dashboard and front doors	S	—	—	—
Decorative inlays, "nature crossed brushed" to dashboard and front doors	—	S	—	—
Decorative inlays, "carbon grey" to dashboard and front doors	—	—	S	—
Black headlining and pillar trim	—	—	S	S
Decorative inlays, "black metal chrome" to dashboard and front doors	—	—	—	S
Interior lighting				
With time delay	S	S	S	S
LED front reading lights (2) and rear passenger reading lights (2)	S	S	S	S
10 colour LED ambient lighting	—	S	—	—
30 colour LED ambient lighting	—	P	S	S
Driver and front passenger LED foot well lighting, selectable light colour	—	P	S	S



Comfort and Convenience Cont.

Golf
Golf Life
Golf R-Line
Golf GTI

In car entertainment and technology

Digital Cockpit Colour digital display with customisable views of speedometer, tachometer, driving data and driver assistance systems	S	—	—	—
Composition Media audio system 8.25" colour capacitive touch screen display with smartphone style HMI, AM/FM radio, telephone, media, App-Connect-, sound, vehicle and driver assistance system settings	S	—	—	—
Innovision Cockpit	—	S	S	S
Digital Cockpit Pro Colour digital display with multiple customisable views of speedometer, tachometer, navigation, driving data, audio, telephone and driver assistance systems	—	S	S	S
Discover Pro audio and satellite navigation system 10.0" colour capacitive touch screen display with smartphone style HMI, customisable home screen, proximity sensor, gesture and voice control, AM/FM radio, navigation map views, telephone, media, App-Connect-, sound, background lighting, vehicle and driver assistance system settings	—	S	S	S
App-Connect- USB interfaces for Apple CarPlay® and Android Auto™ in front centre console	S	S	S	S
Wireless App-Connect- for Apple CarPlay® and Android Auto™	—	S	S	S
Inductive wireless charging	—	S	S	S
2 USB-C ports in the front, 2 USB-C charging sockets on the centre console in the rear	S	S	S	S
Audio, voice control, driver assistance system and Digital Cockpit control buttons mounted on steering wheel	S	S	—	—
Audio, voice control, driver assistance system and Digital Cockpit touch controls mounted on sports steering wheel	—	—	S	S
Bluetooth® phone connectivity with contacts display, operation via touch screen infotainment system or Digital Cockpit and Bluetooth® audio streaming	S	S	S	S
Speakers, front and rear (6)	S	—	—	—
Speakers, front and rear (6) plus centre speaker	—	S	S	S
Luggage compartment				
Load restraining hooks	S	S	S	S
Luggage compartment light	S	S	S	S
Luggage cover, removable	S	S	S	S
Shopping bag hooks	S	S	S	S
Storage compartments in side lining	S	S	S	S
Variable luggage compartment floor level	S	S	S	S
12 volt socket	—	S	S	S
Mirrors				
Automatic dimming interior rear-view mirror	S	S	S	S
Electrically heated and adjustable exterior mirrors	S	S	S	S
Electrically foldable exterior mirrors	—	S	S	S
LED turn indicators integrated in exterior mirrors	S	S	S	S
Power steering				
Electro-mechanical, vehicle speed and steering input sensitive	S	S	S	S
Progressive steering	—	—	—	S
Sunroof				
Panoramic glass sunroof, electrically slide and tilt adjustable with integrated wind deflector and sunblind	—	P	O	P
12V socket				
Centre console	S	S	S	S
Luggage compartment	—	S	S	S

Comfort and Convenience Cont.

Golf
Golf Life
Golf R-Line
Golf GTI

Seating

Standard front seats	S	—	—	—
Comfort front seats	—	S	—	—
Sports front seats with additional side bolstering and integrated head restraints	—	—	S	S
Height adjustment for front seats	S	S	S	S
Lumbar adjustment for front seats, manually adjustable	—	S	S	S
Split folding rear seat backrest (40/60)	S	S	S	S
Rear seat centre armrest with cup holders (2) and load through provision	—	S	S	S
Steering wheel				
3 spoke leather covered steering wheel	S	S	—	—
3 spoke leather covered flat bottomed sports steering wheel	—	—	S	S
Audio, driver assistance and Digital Cockpit controls	S	S	S	S
Gearshift paddles automatic and DSG models	S	S	S	S
Height and reach adjustable steering wheel	S	S	S	S
Storage				
Centre console storage compartment under armrest	S	S	S	S
Compartment in dashboard centre console	S	S	S	S
Glove compartment with illumination	S	S	S	S
Front door pockets with bottle holders, lined	S	S	S	S
Front seat backrest storage pockets	—	S	S	S
Net on front passenger side centre console	S	S	S	S
Rear door pockets, lined	S	S	S	S
Transmission				
6 speed manual transmission	S	—	—	—
8 speed automatic transmission with sport mode	O	S	S	—
7 speed Direct Shift Gearbox (DSG) with sport mode	—	—	—	S
Upholstery				
Cloth seats	S	—	—	—
Comfort cloth seats	—	S	—	—
Sport cloth and microfleece seats	—	—	S	—
'Scale paper' sports cloth and microfleece seats with red decorative inserts and stitching	—	—	—	S
Vanity Mirrors				
Driver's and passenger's side vanity mirrors in sun visor	S	S	S	S
Illuminated on driver's and passenger's side	S	S	S	S
Windows				
Power front and rear, with roll-back function and one-touch up-down	S	S	S	S
Remote operated convenience close and open feature (programmable)	S	S	S	S
Windows				
2 speed aero windscreen wipers with wash/wipe	S	S	S	S
Rain sensor	S	S	S	S
Rear window with wash/wipe and intermittent wipe	S	S	S	S

~App-Connect is compatible for selected apps with the latest smartphone versions of iOS and Android, active data service, optional connection cable (sold separately).

S Standard O Optional Extra P Available as part of an optional package — Not available



Golf GTI model shown

Options

Sound & Vision package

Harman Kardon 480W premium audio system with 8 speakers plus centre speaker, subwoofer and 12-channel amplifier
 Head up display, windscreen projection - display of speed, driver assistance systems and navigation turn by turn direction

Golf

Golf Life

Golf R-Line

Golf GTI

—

0

0

0

Comfort & Style Package

30 colour LED ambient lighting including front passenger foot wells
 Comfort sport front seats
 Microfleece and cloth seat upholstery
 Panoramic glass sunroof, electrically slide and tilt adjustable with integrated wind deflector and sunblind

—

0

—

—

Luxury package

Active climate seats in front, heated and ventilated
 Electric adjustment for driver's seat with 3 position memory and convenience function
 Lumbar adjustment for driver's seat, electrically adjustable
 Memory function for exterior mirrors
 Panoramic glass sunroof, electrically slide and tilt adjustable with integrated wind deflector and sunblind
 Vienna leather appointed seat upholstery with red decorative stitching
 Leather appointed seats has a combination of genuine and artificial leather, but are not wholly leather

—

—

—

0





Golf GTI model shown

Golf, Golf Life & Golf R-Line - Colours and Upholstery



Pure White



Deep Black PE



Dolphin Grey M



Reflex Silver M
(Excluding R-Line)



Atlantic Blue M



Pomello Yellow PM



Moonstone Grey P
(R-Line)



Golf - Standard Seats
Cloth



Golf Life - Comfort Seats
Comfort cloth



Golf Life - Comfort sport seats (Optional)
Microfleece-cloth



Golf R-Line
Sports cloth-Microfleece

Please note that Metallic, Pearl Effect, Premium and Premium Metallic paint are optional at extra cost. The print process does not allow for exact reproduction of the exterior or the upholstery colours. Please contact your Volkswagen Dealer for further information on colours and upholstery combinations.

Golf GTI - Colours and Upholstery



Pure White



Deep Black PE



Dolphin Grey M



Moonstone Grey P



Atlantic Blue M



Kings Red PM



'Scale Paper' Black/Red
Sports cloth seat upholstery



Black Vienna
Leather appointed seat upholstery#

#Leather appointed seats have a combination of genuine and artificial leather, but are not wholly leather.
Please note that Premium Metallic paint is optional at extra cost. The print process does not allow for exact reproduction of the exterior or the upholstery colours.
Please contact your Volkswagen Dealer for further information on colours and upholstery combinations.

Technical Specifications

	Golf Golf Life Golf R-Line		Golf GTI
Engine	1.4 litre TSI		2.0 litre TSI
Type	4 cylinder inline turbocharged direct injection petrol with engine Start/Stop system*		4 cylinder inline turbocharged direct injection petrol with engine Start/Stop system*
Installation	Front transverse		Front transverse
Cubic capacity, litres/cc	1.4/1395		2.0/1984
Bore/stroke, mm	74.5/80.0		82.5/92.8
Max power, kW @ rpm	110 @ 5000		180 @ 5000 - 6200
Max torque, Nm @ rpm	250 @ 1500 - 4000		370 @ 1600 - 4300
Compression ratio	10.5:1		9.6:1
Ignition system	Electronic		Electronic
Exhaust emission control	Exhaust gas recirculation, three way catalytic converter and lambda probes		Three way catalytic converter and lambda probes
Fuel type (Recommended)	Premium unleaded 95 RON minimum		Premium unleaded 95 RON minimum
Transmission	6 speed Manual [^]	8 Speed Automatic	7 Speed Direct Shift Gearbox (DSG) with sport mode
Driven wheels	Front wheel drive	Front wheel drive	Front wheel drive
Performance			
0 – 100 km/h, seconds	8.3	8.5	6.4
Fuel Consumption **			
Combined, L/100km	6.0	5.8	7.0
Urban, L/100km	7.6	7.2	9.3
Extra Urban, L/100km	5.0	5.0	5.6
CO ₂ emission g/km~	136	132	159
Fuel tank capacity litres	50	50	50
Weight			
Tare Mass kg's	1270	1304	1409
Towbar Capacity, braked# kg	1500		1600
Towbar Capacity, unbraked# kg	650		720
Towbar Load Limit# kg	80		80
Suspension			
Front Axle	Independent, MacPherson struts with lower A-arms. Anti-roll bar. Sports suspension R-Line.		Independent, MacPherson struts with lower A-arms. Anti-roll bar. Lowered sports suspension with Adaptive Chassis Control.
Rear Axle	Independent, four-link with coil springs. Anti-roll bar. Sports suspension R-Line.		Independent, four-link with coil springs. Anti-roll bar. Lowered sports suspension with Adaptive Chassis Control.
Steering	Electro-mechanical power assisted rack & pinion steering. Progressive steering R-Line.		Electro-mechanical power assisted rack & pinion steering. Progressive steering.
Turning Circle (m)	10.9		10.9
Brakes			
Front	Ventilated discs		Ventilated discs
Rear	Discs		Discs
Brake Systems	Anti-lock Braking System (ABS) with Electronic Brake-pressure Distribution (EBD), Brake Assist and Electronic Stabilisation Program (ESP). Brake energy recuperation.		Anti-lock Braking System (ABS) with Electronic Brake-pressure Distribution (EBD), Brake Assist and Electronic Stabilisation Program (ESP). Brake energy recuperation.

[^]The 6 Speed Manual transmission is only available with the Golf model grade.

- Emission level according to European Regulation (EC) No. 715/2007 and Regulation (EC) No. 692/2008

*The Start/Stop system is designed to reduce fuel consumption and CO2 emissions. It achieves this by automatically switching off the engine while the vehicle is stationary and then starting it again automatically when the driver wants to drive off. There are certain operating conditions where the Start/Stop system is deactivated (e.g. during engine warm-up), please refer to the owner's manual for full operating information.

#When fitted with Volkswagen Genuine Tow Bar. Towing capacities are applicable to Volkswagen Genuine Accessory Tow Bar. Towing capacity figures are maximum figures and actual towing capacity depends on factors including the laden mass of the vehicle, driving conditions and fitment of any accessories. Volkswagen Group Australia does not endorse or will not be held liable for any claim, loss or damage arising from the use or fitment of electronic trailer brakes.

**Fuel consumption figures according to ADR 81/02 derived from laboratory testing. Factors including but not limited to driving style, road and traffic conditions, environmental influences, vehicle condition and accessories fitted, will in practice in the real world lead to figures which generally differ from those advertised. Advertised figures are meant for comparison amongst vehicles only.

Technical Specifications

	Golf Golf Life Golf R-Line		Golf GTI
Exterior Dimensions			
Overall length mm	4284		4287
Width mm	1789		1789
Height mm	1456		1463
Wheelbase mm	2636		2631
	Golf	Life / R-Line	Golf GTI
Track, front mm	1539	1533	1535
Rear seat folded L	1509	1503	1513
Luggage area volume			
Rear seat upright L	374		374
Rear seat folded L	1230		1230
Length, rear seat upright mm	800		787
Length, rear seat folded mm	1493		1545
Width between wheel arches mm	1003		1003



Golf R-Line model shown



Overseas model shown. Local specifications may vary.

Glossary

Adaptive Cruise Control (ACC)

Adaptive Cruise Control (ACC) is an extension of the conventional cruise control system with advanced capabilities based on a radar sensor. When ACC is activated, the vehicle automatically brakes and accelerates to a speed and distance set by the driver.

If the Golf approaches a slower vehicle, the ACC brakes the car to the same speed and maintains the pre-selected distance. Even when a vehicle pulls into the same lane in front of you or slows, your vehicle is automatically decelerated to the pre-selected distance. If the vehicle ahead moves out of your lane, the Golf then accelerates up to the pre-set desired speed.

Deceleration of the vehicle may take place via intervention in the engine management system. If deceleration via engine torque is not sufficient, brake intervention takes place, braking the vehicle to a standstill if the traffic situation necessitates in vehicles equipped with an automatic transmission. ACC can be reactivated automatically by depressing the accelerator pedal. In vehicles fitted with a manual transmission, the system is automatically deactivated at speeds below 30 km/h and the driver is prompted to take charge by visual and acoustic signals.

In the R-Line and GTI model grades, the dynamics of the ACC system can be individually varied by selecting one of the driving programs from the driving profile selection.

Adaptive Cruise Control (ACC) cannot replace the driver's attentiveness. The driver is still legally responsible for the vehicle and must monitor the speed and distance in relation to other vehicles. The ACC system should not be used on winding roads or in adverse weather conditions such as heavy rain.

Anti-lock Braking System (ABS)

When braking, wheel speed sensors measure the road wheel speed and should one or more wheels start to lock the ABS system reduces brake pressure to that wheel. This prevents the wheels from locking during heavy or emergency braking, enabling the vehicle to remain steerable.

Anti-Slip Regulation (ASR)

ASR is a traction control system that prevents the wheels from spinning under acceleration by reducing engine torque.

Auto Hold function[^]

As soon as the vehicle comes to a complete stop, the ABS hydraulic unit stores the vehicle's final braking pressure. So even when you take your foot off the brake pedal, all four wheels' brakes remain applied, providing increased comfort in stationary traffic. This function is released automatically when you drive off again.

Brake Assist

During emergency braking, Brake Assist aids the driver by increasing the brake pressure automatically to a level exceeding the locking limit. The ABS is thus quickly brought into the operating range, which enables maximum vehicle deceleration to be achieved.

Driving Profile Selection[^]

Driving profile selection provides the driver with a wide-ranging choice of settings that can be made to the vehicle according to the driver's preferences. The driver has the option of choosing between the following driving profiles: Eco, Comfort, Sport and Individual. Eco mode has been designed to enhance fuel efficiency by adapting engine performance, earlier gearshift points and consumption-optimised control of the air conditioning system. The Comfort profile offers a comfortable but dynamic driving style with a softer suspension setting of the Adaptive Chassis Control (GTI). Sport provides faster response of the accelerator pedal and steering while the transmission switches to Sport mode. The Individual setting allows the driver to separately set various parameters including steering, engine, Adaptive Cruise Control (ACC) and air conditioning.

[^]Only on selected models.

Electronic Brake-pressure Distribution (EBD)

Electronic, more sophisticated means of regulating the ratio of front/rear brake pressure. Settings are varied according to driving and load conditions to ensure each wheel is braked to the optimum extent.

Electronic Differential Lock (EDL)

EDL improves driving and steering characteristics when accelerating on road surfaces where each wheel has a different degree of traction. The system operates automatically and is combined with the ABS system. Using the ABS wheel sensors, EDL monitors the speed of the individual driving wheels. When a difference in driving wheel speed is detected (i.e. when one wheel starts to spin due to differences in road surfaces, e.g. due to water or dirt) the system brakes the spinning wheel, transferring engine power to the wheel with the best traction.

Electronic Stabilisation Program (ESP)

ABS and ASR traction control systems are integrated into the Electronic Stabilisation Program (ESP). In short, ESP helps ensure that the vehicle goes where you steer it even in extreme driving conditions. The ESP system constantly compares the actual movement of the vehicle with pre-determined values and should a situation arise where the vehicle starts to skid, ESP will apply the brakes to individual wheels and automatically adjust the engine's power output to correct the problem. ESP prevents the vehicle from losing control when trying to avoid an accident, for example. It also reduces the effects of understeer or oversteer.

Emergency Assist[^]

Emergency Assist monitors the driving characteristics and recognises, within the limits of the system, if the driver suddenly becomes incapable of driving (due to the vehicle not being controlled).

Emergency Assist detects a lack of activity on the part of the driver and issues repeated visual and acoustic warnings and initiates a quick jolt of the brakes and tensioning of the driver's seatbelt to request the driver to take control of the vehicle.

If the driver remains inactive, the system automatically controls acceleration, braking and steering to slow the vehicle down and keep it in the lane. If there is sufficient stopping distance, the system decelerates the vehicle to a complete stop and switches on the electronic parking brake automatically, parking position is engaged, the doors are unlocked and the interior lighting switched on.

When Emergency Assist is actively controlling the vehicle, the hazard warning lights are switched on and the vehicle horn may sound to warn other road users. Ideally this will prevent a collision, or at least reduce its severity.

Emergency Assist cannot replace the driver's attentiveness. The driver is still legally responsible for the vehicle and must monitor the speed and distance in relation to other vehicles. Emergency Assist utilises both the Adaptive Cruise Control (ACC) and Lane Assist driver assistance systems. The ACC system should not be used on winding roads or in adverse weather conditions such as heavy rain. The system will not work if there are no recognisable lane markings. The camera vision can be reduced by rain, snow, heavy spray or oncoming lights. This and vehicles in front of you can lead to the lane markings not being recognised by the Lane Assist system.

Exit Warning System[^]

While the Golf is stationary, the exit warning system warns the occupants about a potential collision when a door is opened. The system uses the rear radar sensors to monitor the area behind and to the side of the vehicle. Where possible, it detects objects, such as cars and cyclists, as they approach the vehicle from behind. When you open the door, the warning lamp on the exterior mirror flashes if another road user in a critical situation is detected. At the same time an acoustic warning signal is heard. The corresponding warning lamps also flash if another road user is detected in a critical situation while the door is already open.

Exit warning system cannot replace the driver's attentiveness. If the driver or passenger notices a risk that pedestrians, other vehicles or objects could be damaged or if they are uncertain of the risk, they will need to react accordingly.

Glossary

Extended Electronic Differential Lock (XDL)

XDL is an extension of the Electronic Differential Lock (EDL) function. When cornering, XDL responds to the load relief at the front wheel on the inside of a corner. The ESP hydraulics are used for the XDL to apply pressure to the wheel on the inside of the corner in order to prevent wheel spin. This improves traction and reduces the tendency to understeer. As a direct result of the one-sided and precise braking pressure, cornering is sportier and more accurate.

Fatigue Detection

The driver Fatigue Detection system automatically analyses the driving characteristics and if they indicate possible fatigue, recommends that the driver takes a break. The system continually evaluates steering wheel movements along with other signals in the vehicle on motorways and others roads at speeds in excess of 60 km/h, and calculates a fatigue estimate. If fatigue is detected, the driver is warned by information in the Multi-function Display and an acoustic signal. The warning may be repeated once if the driver has not taken a break.

Fatigue Detection cannot replace the driver's attentiveness. The driver is still legally responsible for the vehicle and therefore determining whether or not they are fit to drive. The driving behaviour can be evaluated only when the speed is above approximately 60km/h. The functionality of the system is restricted given a sporty driving style, winding roads and poor road surfaces.

Front Assist with Pedestrian and Cyclist Monitoring functions

The Front Assist ambient traffic monitoring system uses a radar sensor and multi-function camera to detect critical distance situations and thus help to shorten the braking distance, reducing the risk of a rear-end collision.

If a vehicle is detected ahead of you in the lane, the distance and the speed relative to it are calculated. If the gap is closing too fast, Front Assist initially warns the driver by means of an audible as well as a visual signal. At the same time, the brake pads are brought into contact with the brake discs and the sensitivity of the Brake Assist is increased. This primes the braking system for a possible emergency stop. Furthermore, an automatic jolt of the brakes warns the driver of the danger. If the driver also fails to react to the warning jolt, Front Assist brakes automatically, helping to avoid a collision or reduce the severity of the accident.

At vehicle speeds below 30km/h, the system monitors the area ahead of the car for vehicles which might present a threat of collision. If a collision is likely, the brakes are first pre-charged and makes the Brake Assist system is made more sensitive: if the driver should notice the risk, the car is ready to respond more quickly to their braking action. However, if the driver still takes no action and a collision becomes imminent, emergency braking is independently applied. If the driver intervenes to try to avoid the accident, either by accelerating hard or by steering, the system will deactivate and allow the driver to complete the avoidance manoeuvre.

Pedestrian and Cyclist Monitoring is an extension of the Front Assist monitoring system. The system uses a radar sensor in the radiator grille and windscreen mounted multi-function camera to monitor the area in front of the vehicle and within the limits of the system, register certain situations, for example a pedestrian stepping onto the road suddenly. The system then gives an immediate acoustic and visual signal to warn the driver. If the driver does not brake, the system initiates a jolt of the brake as a warning about the critical situation, while at the same time preparing for hard braking. If the driver fails to react, the system automatically performs emergency braking, within system limits. Ideally this will prevent a collision, or at least reduce its severity.

Front Assist with Pedestrian and Cyclist Monitoring cannot replace the driver's attentiveness. The driver is still legally responsible for the vehicle and must monitor the speed and distance in relation to other vehicles.

Front Differential Lock[^]

The front differential lock is an electronically controlled mechanical differential lock. The drive torque is distributed via an electronically operated clutch in accordance with the driving situation. The differential lock

actively counteracts understeer when cornering by increasing the drive force to the wheel on the outside of the bend. This provides more agility and precision on curves, and a more linear driving response. The front differential lock also provides maximum traction for front-wheel drive vehicles.

Both the XDL and front differential lock increase agility, traction and cornering ability. XDL exerts its effect during medium lateral acceleration, whilst the front differential lock enhances this effect right up to the dynamic driving limit range.

Lane Assist

Lane Assist is a lane departure warning system that is designed to help reduce the likelihood of the vehicle leaving the road or crossing into an oncoming lane and therefore the risk of accident as a result of driver distraction or a lapse in concentration.

The Lane Assist system monitors the road ahead with the aid of a camera (located near the interior rear-view mirror) which recognises lane markings and evaluates the position of the vehicle at speeds above 60km/h. If the vehicle starts to leave the lane, the Lane Assist system takes corrective steering action. If this is not sufficient the driver is warned about the situation by a steering vibration. Additionally, if no active steering movements by the driver are recognised, a message will appear in the Digital Cockpit in conjunction with a warning tone. The corrective steering function can be overridden by the driver at any time and the system does not react if the turn indicator is set before crossing a lane marking.

Lane Assist cannot replace the driver's attentiveness. The driver is still legally responsible for the vehicle and therefore staying in the lane at all times. The system will not work if there are no recognisable lane markings. The camera vision can be reduced by rain, snow, heavy spray or oncoming lights. This and vehicles in front of you can lead to the lane markings not being recognised by the Lane Assist system.

Light Assist[^]

Light Assist provides enhanced comfort and safety on the road by means of automatic high beam control. A camera on the interior mirror observes the traffic above 60 km/h and in complete darkness, Light Assist automatically switches on the high beam headlights. The system detects vehicles travelling ahead, as well as oncoming traffic and automatically dips the headlights before they are dazzled. Automatic alternation between high beam and low beam headlights ensures optimum illumination of the road ahead.

Manoeuvre braking

Manoeuvre braking assists the driver to avoid or reduce damage in a potential collision by initiating emergency braking. It supports the driver during forward and reverse manoeuvring in a speed range of a maximum 10 km/h. If the risk for an accident is recognised, emergency braking is initiated to minimise possible damage.

Manoeuvre braking cannot replace the driver's attentiveness. The driver is still legally responsible for the vehicle. The object must be detected by the sensors. If the driver notices a risk that pedestrians, other vehicles or objects could be damaged they need to react accordingly and stop the vehicle.

Multi-collision brake

The multi-collision brake has been designed to provide effective assistance for the driver in the moments after an accident. Multi-collision brake triggers automatic controlled braking once an initial collision has been detected so as to reduce the intensity of further accidents after a collision and can help prevent follow-on collisions with oncoming traffic.

The triggering of the multi-collision brake is based on a collision being detected by the airbag sensors. The ESP control unit limits the deceleration of the vehicle by the multi-collision brake to a defined value and vehicle speed. The vehicle can still be controlled by the driver, even when automatic braking is taking place. The driver can interrupt the multi-collision braking at any time by accelerating or braking even more strongly.

[^]Only on selected models.

Glossary

Oncoming vehicle braking when turning

Oncoming vehicle braking when turning aims to prevent or reduce the impact of head-on collisions with vehicles when turning. The front radar sensor and windscreen camera are used to monitor the area in front of the driver's own vehicle. If a hazardous situation is detected – the driver turns into oncoming traffic, the vehicle is automatically braked and a warning issued to help prevent a collision. Key variables for detection of the turning manoeuvre are the steering angle and the steering-angle speed. A turning manoeuvre is detected even if the turn signal has not been activated. The function is active up to a speed of approximately 15 km/h.

Oncoming vehicle braking when turning cannot replace the driver's attentiveness. The driver is still legally responsible for the vehicle and must monitor the speed and distance in relation to other vehicles.

Park Assist

The third generation Park Assist system actively helps the driver when entering or reversing into 90° parking bays, as well as reversing into and driving out of parallel parking spaces. The system works by using sensors mounted either side of the front and rear bumpers together with parking distance sensors front and rear. To park, the driver simply presses the Park Assist button to select the type of parking manoeuvre and uses the appropriate indicator as the car slowly passes the potential parking space. Sensors scan the size of the parking space as the car is driven past and the driver is alerted if the parking space is big enough. If there is sufficient space, the driver stops the car, selects the correct gear and lets go of the steering wheel.

Park Assist will alert the driver of the intended path and subsequently the appearance of obstacles in the Multi-Function Display, within the driver's field of vision. Park Assist then actively supports the driver by taking over the steering control and parks the vehicle in the available space using the ideal course, if necessary with several moves. The driver can however take over the control of the steering at any time and end the automatic parking procedure.

Park Assist cannot replace the driver's attentiveness. The driver is still legally responsible for the vehicle. If the driver notices a risk that pedestrians, other vehicles or objects could be damaged or if they are uncertain of the risk, they will need to react accordingly and stop the vehicle, ending the function.

Proactive occupant protection system

The proactive occupant protection system incorporates active and passive safety elements. When the system detects a potential accident situation at speeds above approximately 30km/h, the occupants and the vehicle are prepared for a possible accident. Automatic reversible tensioning of the seat belts secures the driver and front passenger in their seats to attain the best possible protective potential of the airbag and belt system. The hazard warning lights are activated. In case of high transverse dynamics the side windows (and optional panoramic sunroof) are also closed, leaving just a small air gap. Closing of the windows offers optimal support to the head and side airbags which results in the best possible protection.

The latest generation of the Proactive Occupant Protection System can detect risks at the rear utilising the signals from the rear radar sensors for the Side Assist system. If the system recognises an immediate risk, the vehicle and occupants are prepared for a possible rear end collision by warning an approaching vehicle with fast hazard warning light frequency, closing the side windows (and optional panoramic sunroof), as well as tighten the front seat belts.

Side Assist with Rear Traffic Alert

Side Assist with Rear Traffic Alert system supports the driver in assessing and avoiding dangerous situations, especially in critical situations, e.g. city and heavy traffic. Side Assist detects cars and motorcycles next to and up to 70m to the right and left behind your own vehicle and highlights these vehicles via a LED indicator in the door mirror at speeds above 15km/h. If you indicate to change lanes, the system calculates whether one of them could be dangerous due to position and speed and if deemed necessary will draw attention to

this by flashing noticeably. In this instance, Lane Assist can also apply corrective steering to help avoid a collision.

Rear Traffic Alert monitors the traffic crossing behind the vehicle when reversing out of a parking space or manoeuvring. Utilising the Side Assist radar sensors in the rear bumper the system warns the driver of approaching traffic via an audible warning followed by a visual message in the Optical Parking System (OPS) and can also provide braking intervention if necessary to help avoid a collision.

Side Assist with Rear Traffic Alert cannot replace the driver's attentiveness. The driver is still legally responsible for the vehicle and must monitor the speed and distance in relation to other vehicles.

Traffic Jam Assist[^]

In congested traffic situations, Traffic Jam Assist makes driving significantly more comfortable and helps to avoid typical rear-end collision accidents. The Traffic Jam Assist function combines the driver assistance systems Adaptive Cruise Control (ACC) and Lane Assist with adaptive lane guidance. In a speed range of 0-60km/h, the system automatically controls acceleration, braking, steering and if required, will decelerate to a stop behind a vehicle that is stopping.

Traffic Jam Assist cannot replace the driver's attentiveness. The driver is still legally responsible for the vehicle and must monitor the speed and distance in relation to other vehicles. Traffic Jam Assist has been developed for use only on motorways. The ACC system should not be used on winding roads or in adverse weather conditions such as heavy rain. The system will not work if there are no recognisable lane markings. The camera vision can be reduced by rain, snow, heavy spray or oncoming lights. This and vehicles in front of you can lead to the lane markings not being recognised by the Lane Assist system.

Travel Assist

Travel Assist is an assistance system for partly automated driving. At the push of a button, Travel Assist can support the driver in monotonous and tiring driving situations commonly encountered on long motorway journeys. This system combines the functions of Adaptive Cruise Control (ACC), Lane Assist with adaptive lane guidance and Side Assist to accelerate, brake and maintain the vehicles position within its lane. The capacitive steering wheel can detect whether the driver's hands are on the steering wheel in readiness to steer the vehicle and will issue a visual and audible warning when not detected.

Travel Assist cannot replace the driver's attentiveness. The driver is still legally responsible for the vehicle and must monitor the speed and distance in relation to other vehicles. Travel Assist has been developed for use only on motorways. The ACC system should not be used on winding roads or in adverse weather conditions such as heavy rain. The system will not work if there are no recognisable lane markings. The camera vision can be reduced by rain, snow, heavy spray or oncoming lights. This and vehicles in front of you can lead to the lane markings not being recognised by the Lane Assist system.

[^]Only on selected models.

Golf Range

Volkswagen Group Australia Pty Ltd
24 Muir Road Chullora NSW 2190
ABN 14 093 117 876

Printed in Australia
June 2021

Publication: VWPGOLPRANSPMY21.5

Important Information

Apple CarPlay® is a registered trademarks of Apple Inc. Android Auto™ is a registered trademark of Google Inc. Bluetooth® is a registered trademark of Bluetooth SIG Inc.

Volkswagen is distributed by Volkswagen Group Australia Pty Ltd, 24 Muir Road Chullora, NSW 2190. ABN 14 093 117 876. Specifications are as planned at June 2021, for Model Year 21.5 and are subject to change without notice or obligation. All information in this specification sheet is correct at the time of publication, however variations may occur from time to time and Volkswagen, in so far as it is permitted by law to do so, shall not be liable in any way as a result of any reliance by any person on anything contained in this specification sheet. Authorised Volkswagen dealers will provide up-to-date information on model application, design feature, prices and availability on request.

Your Volkswagen dealer.